

Beaumont Rag

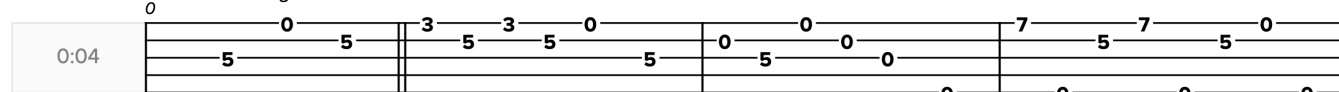
A

G

C

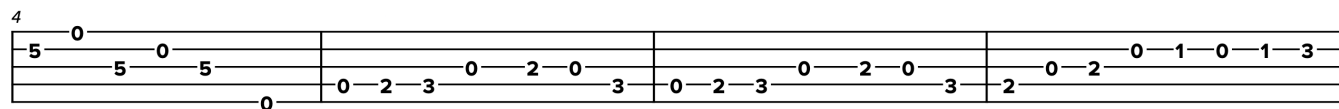
GDGBD tuning

0:04



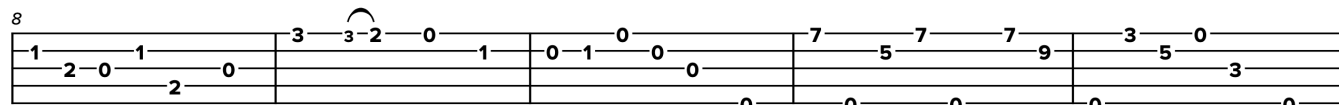
G

C



G

C



F

F#dim

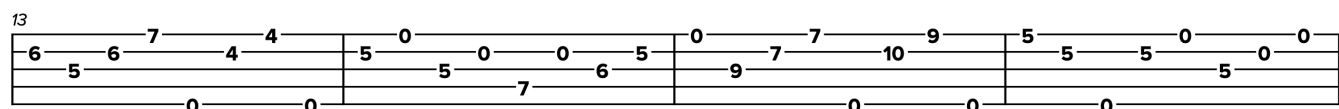
C

A7

D

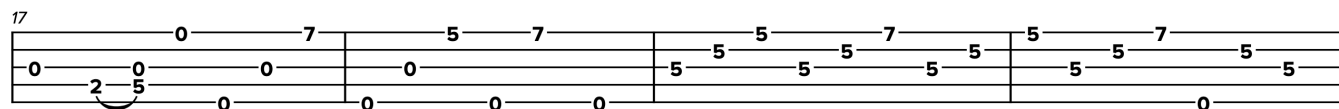
G

C



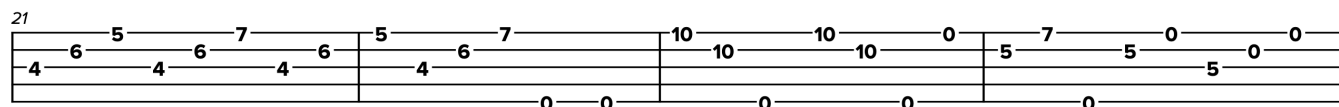
G

C



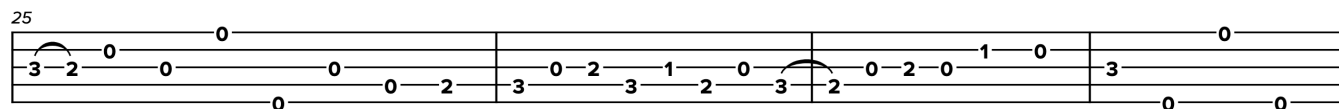
G

C



G

C



F

F#dim

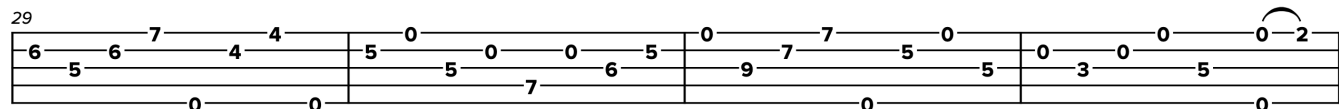
C

A7

D7

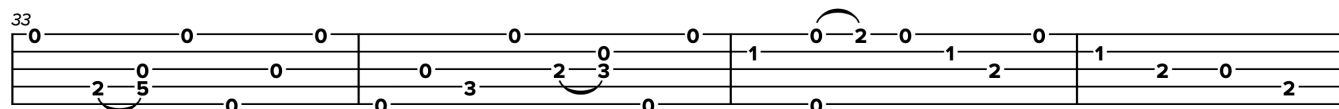
G7

C

**B**

G

C



G C

37

G C F F#dim

41

C A7 D7 G7 C G

46

C G

50

C G

54

C F F#dim C A7 D7 G

59

C

C G C

64

G C

69

G C

73

F F#dim C A7 D7 G7 C

77

81

G C

5 3 5 3 5 3 4 | 5 2 4 0 | 1 0 2 0 1 2 | 1 2 0

85

G C

5 6 4 6 7 4 6 | 5 4 6 7 | 10 7 9 5 | 0 0 1 2 3 2

89

G C

0 2 3 3 0 | 5 3 5 0 0 0 | 1 1 0 0 3 | 0 3 4

93

F F#dim C A7 D G C C7

6 5 6 7 4 4 | 5 0 0 0 5 | 0 7 7 10 9 | 10 10 5 5 0 0

97

F F#dim C A7 D G C

6 5 6 7 4 4 | 5 0 0 0 5 | 0 7 7 10 12 | 10 8 12 13 14

0:20